

Project Overview

Current Status /Phase	Design
Construction Type	New Construction & Demo
Gross Square Footage	10,000 SF
Division of State Architect	Yes
Construction Method	Progressive Design-Build
Contract Start Date	September 11, 2025
Contract Expiration Date	TBD

Project Financials

Funded By	Measure HH
-----------	------------

Project Teams

Landscape Architect	Simon
Structural Engineer	BWE
Electrical Engineer	ELEN Consulting
Civil Engineer	Kimley Horn
Mechanical Engineer	ELEN Consulting
SDCCD Project Manager	Paul Cristilli (Kitchell)
Construction Manager	Steve Evanco
DSA Inspector	TBD
Contractor	Harper Construction Company

Site Detail

Campus	Montgomery –Gibbs Airport
Coordinates	32°48'46.47"N 117° 8'59.57"W

Project Schedule

Programming & Planning	Design & DSA Approval	Construction Completion	FFE & Move-In
Fall 2025/Spring 2026	Winter 2027	Spring/Summer 2028	Spring/Summer 2028

Project Insight

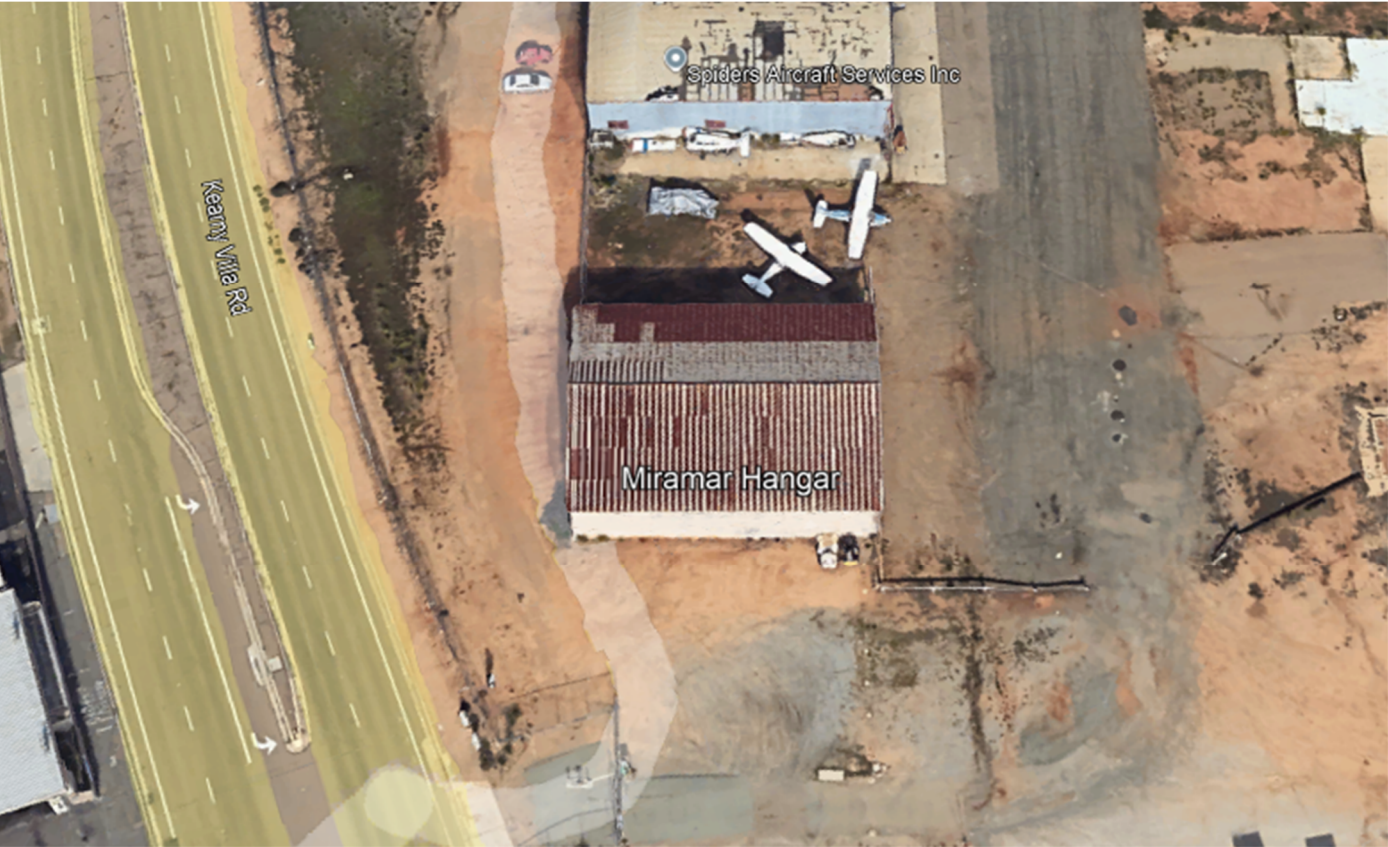
The project was awarded at the September 11 Board meeting and a kickoff meeting was held while programming and design meetings progress.

8/22/25: Issuance of Notice of Intent to Award

9/11/25: Board Approval

10/3/25: Project Kickoff Meeting

Fall 2025: Programming Phase



*Renderings coming soon

Project Features

The Miramar College Montgomery Field Instructional Center Project includes the demolition of the existing 6,300 SF hangar and construction of approximately 8,500 ASF of new space to support expanded aviation workforce training. The renovated facility will feature modern technology, climate control, and advanced training equipment to enhance safety and instructional capabilities.

The project also includes new site utilities, exterior walkways, accessible parking and pathways, curb and gutter improvements, landscaping, and signage, ensuring full integration with surrounding infrastructure and compliance with accessibility standards.

Project Site Plan

